

# 2D Low-Contrast Resolution Phantom

**The 2DLC provides the opportunity to evaluate low contrast resolution in CT and FD-CT and to optimize tube current, collimation, pitch and image reconstruction for the desired low-contrast resolution in all types of clinical applications.**

The Phantom has been designed to evaluate the imaging capabilities of 3D X-ray imaging modalities in the x/y-plane. CT-scanners low-contrast resolution capabilities can be obtained by a single spiral scan using axial images and coronal reformations. The phantom visualizes the impact of all scan, image reconstruction, and display parameters.

Two series of different low-contrast cylinders with diameter varying from 5 mm to 15 mm are located in the 100 mm diameter cylindrical body of homogeneous tissue-equivalent material.

## Specifications

Phantom diameter ..... 100 mm  
Phantom length ..... 100 mm  
Phantom weight ..... 0.9kg  
Material ..... tissue-equivalent plastic,  
typ. 35HU (120 kV)

Contrast inserts ..... -10 HU and -20 HU  
relative to background

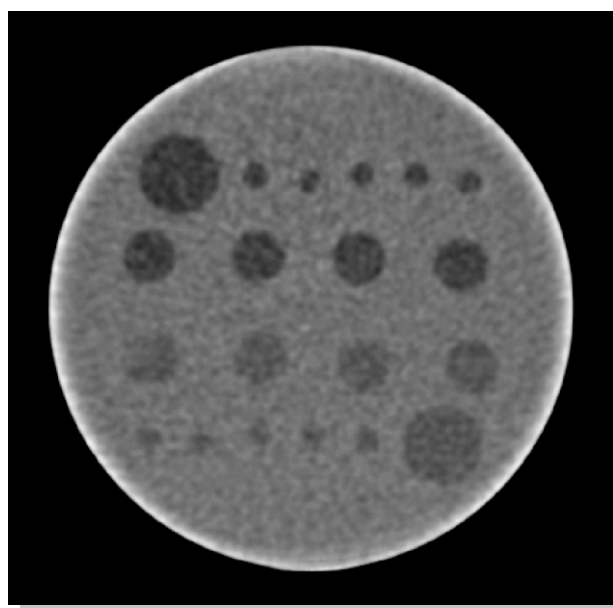
Cylindrical contrast inserts for each contrast:

- 5x 5 mm
- 4x 10 mm
- 1x 15 mm

Accuracy .....  $\pm 1$  HU of specified values



*2DL with different contrast cylinders of -10 HU and -20 HU!*



*CT-scan of the QRM-2DLC*

**深圳市展业达鸿科技有限公司**

吕先生: 15920060912 (微信同号) 0755-22934005 (座机)

地址: 深圳市福田区八卦二路八卦岭工业区615栋419

邮箱: hongqi@thingstet.com

网址: www.thingstet.com